



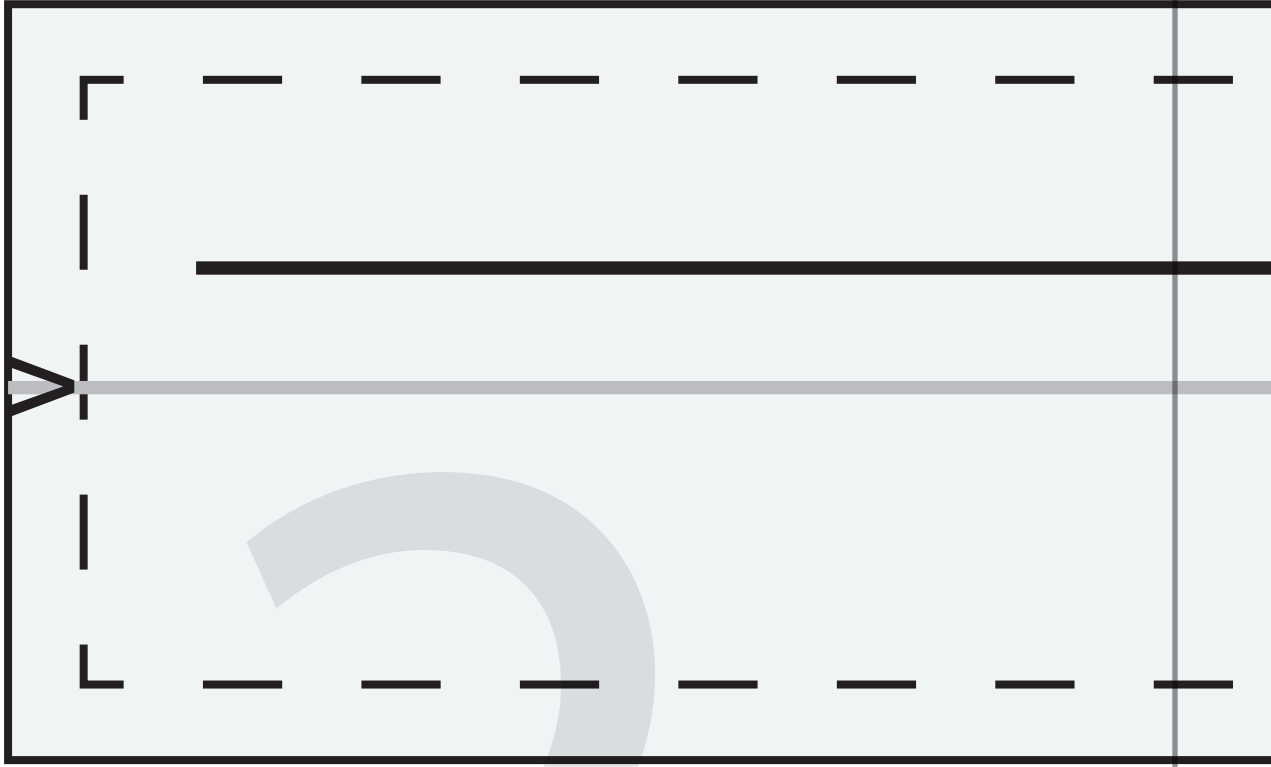
DIY LAUNDRY BAG

Test square

2" x 2"

1/2

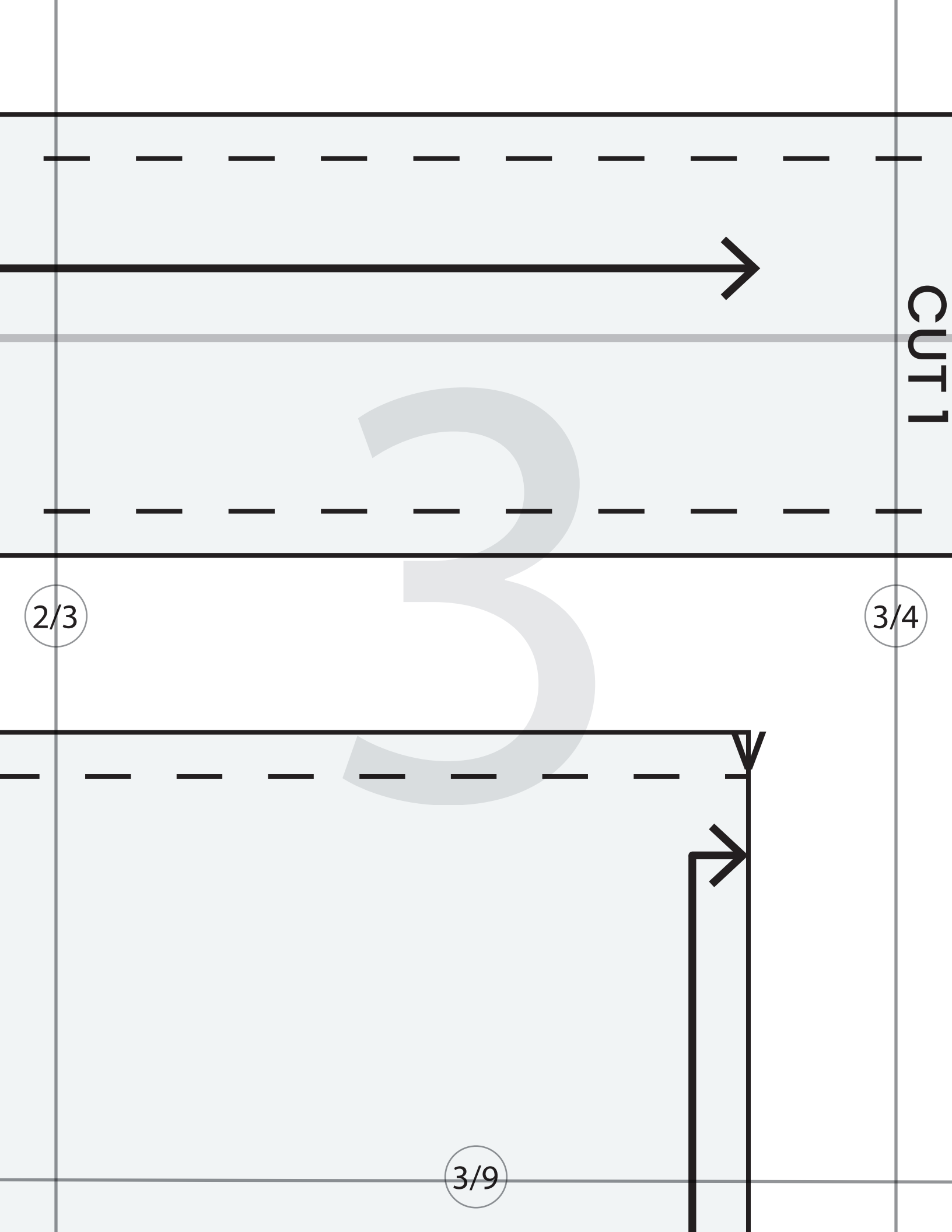
1/7



1/2

2/3

2/8

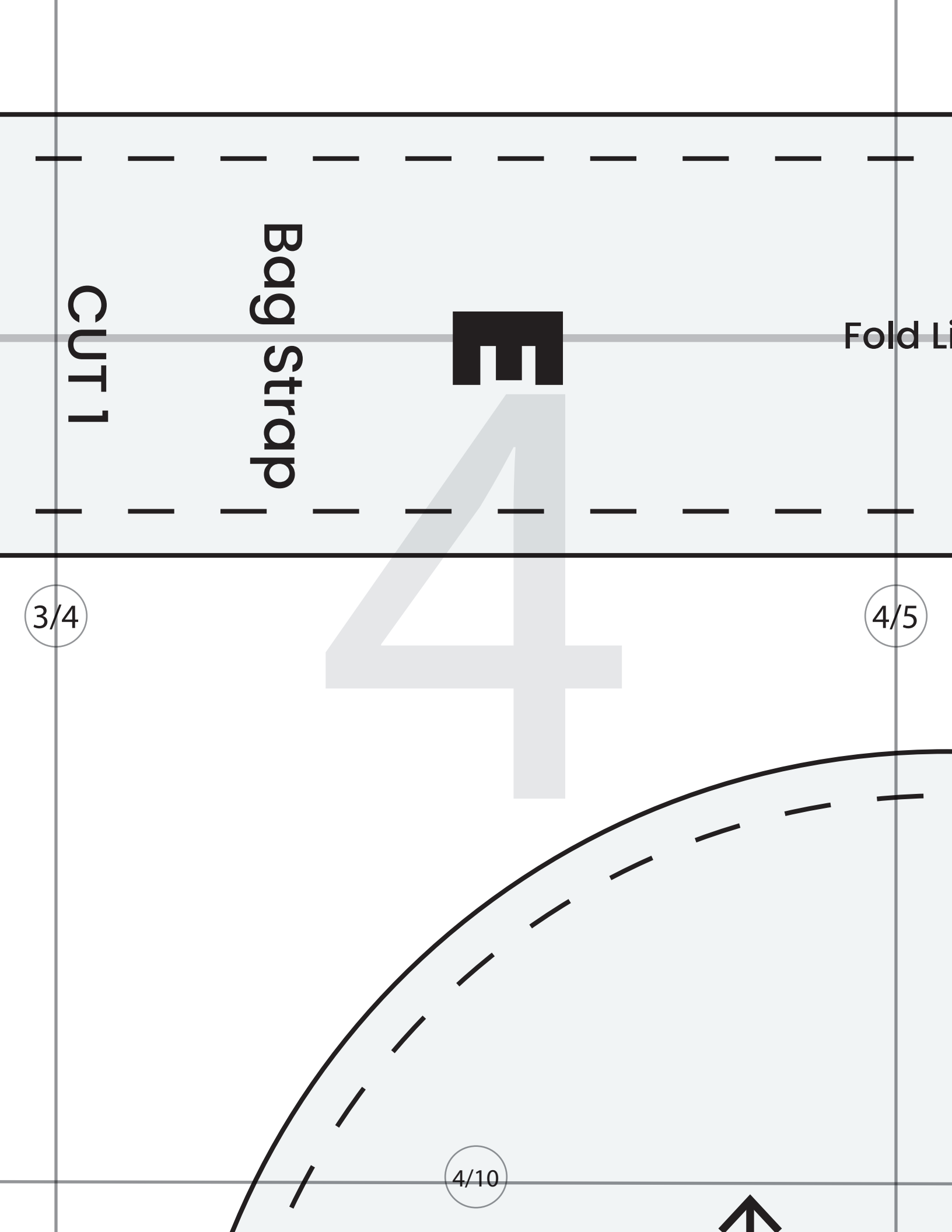


CUT 1

2/3

3/4

3/9



CUT 1

Bag Strap

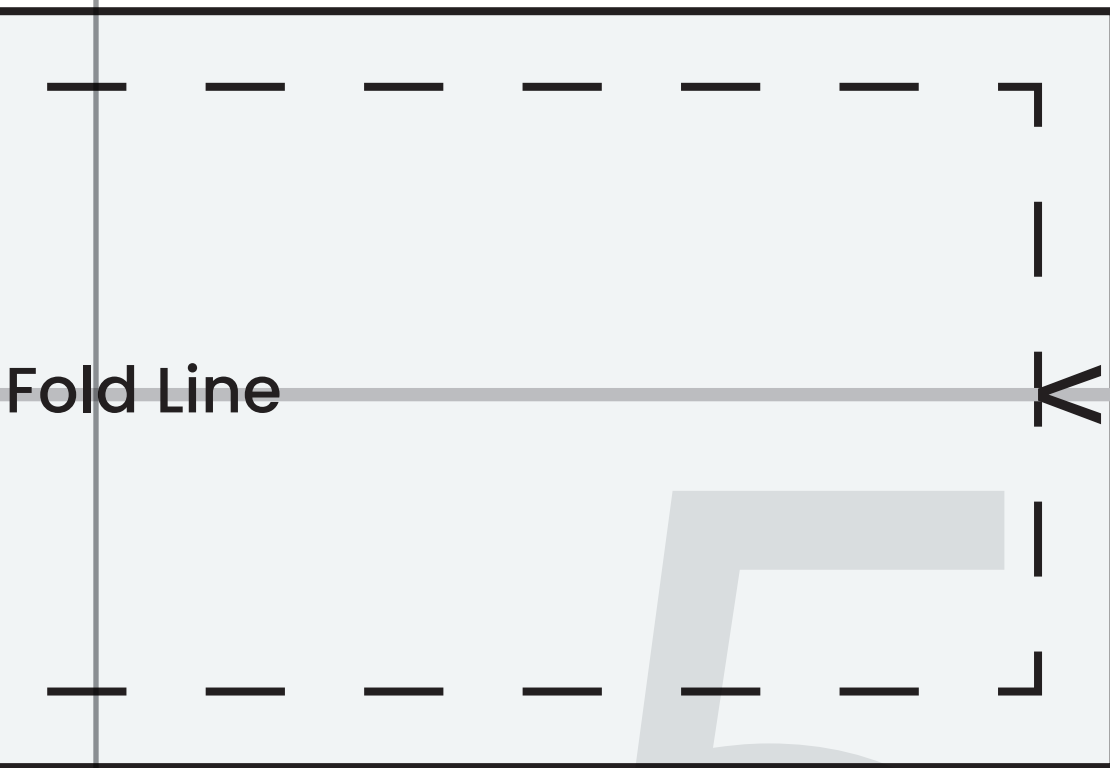
Fold Line

3/4

4/5

4/10



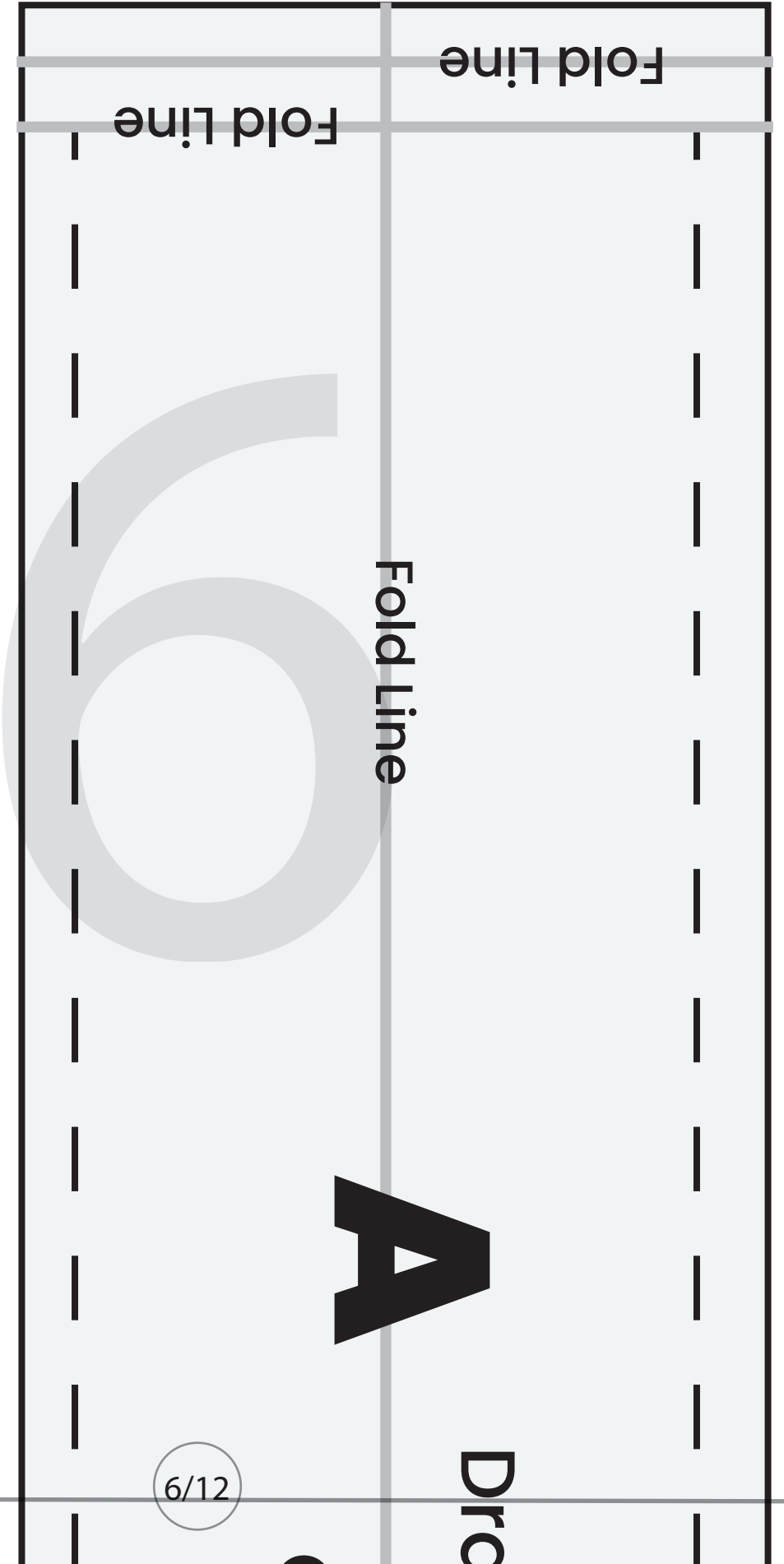


Fold Line

4/5

5/6

5/11



Fold Line

Fold Line

Fold Line

A

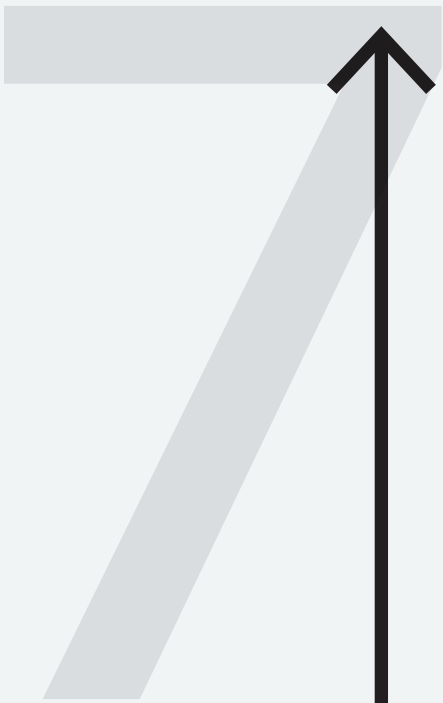
Drc

6/12

$1/7$

$7/8$

$7/13$



2/8

7/8

8/9

8
B

Main Body

8/14

CUT Line fold

3/9

8/9

9

9/10

9/15

CUT ON FOLD

4/10

9/10

10/11

10/16

Circle

CU

5/11

D

Circle Base

CUT 1

10/11

11/12

11/17

6/12

Drawstring Tunnel

CUT 1 on fold



12/18

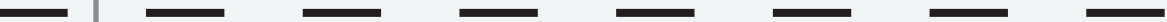
11/12

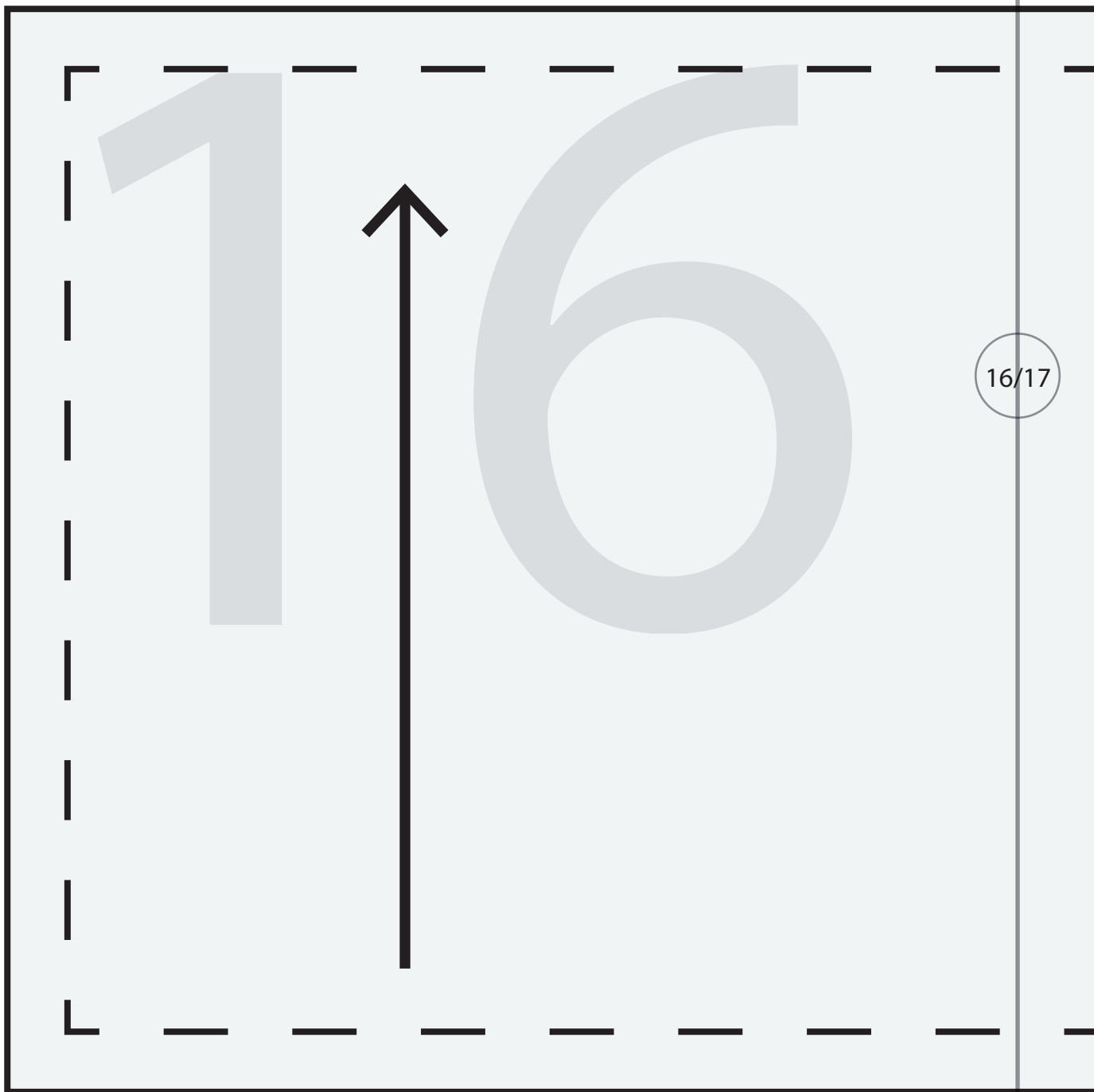
13

CUT 1 on fold

14

15





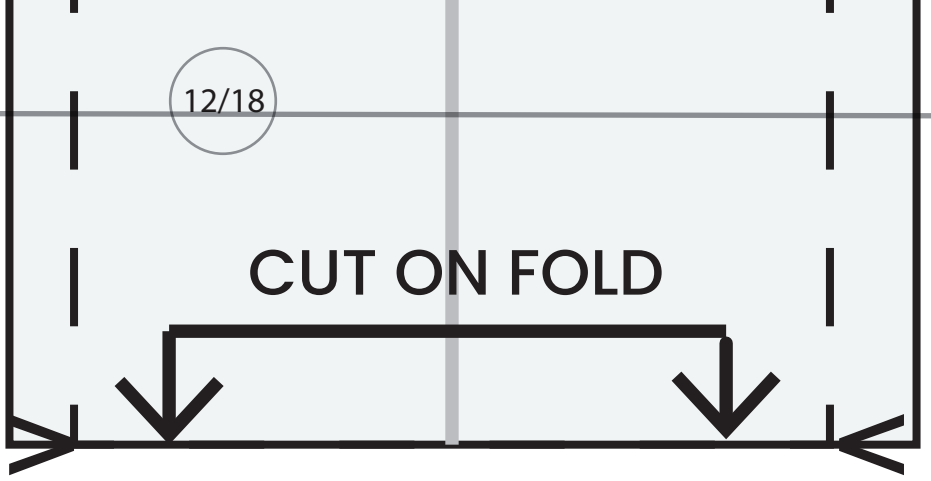


Bottom Contrast Piece

CUT 1 On Fold

12/18

CUT ON FOLD



17/18

CUT ON FOLD

